

RENAULT TRUCKS

Parts & Accessories
New and Used models

Accessories+

BY RENAULT TRUCKS COMMERCIALS





Accessories+

BY RENAULT TRUCKS COMMERCIALS



Growing your fleet?

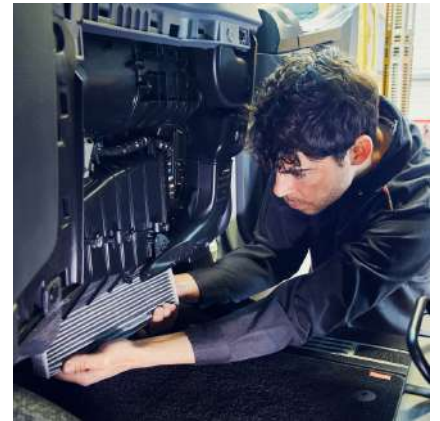
Accessories Plus is here to increase productivity and driver aid.



Introducing Accessories Plus

Designed and **Manufactured** in the UK, our exclusive range of accessories is built to meet OEM quality standards. Engineered specifically for Renault Trucks, these products ensure seamless integration, reliability, and performance.

For complete peace of mind, installation is carried out solely by Renault Trucks trained technicians, maintaining the highest standards of fitment and compliance. Backed by a 3-year warranty, our accessories deliver long-term durability and confidence on the road.



This system allows Renault technicians to install aftermarket products consistently, regardless of dealership location with professional finish that integrates perfectly with the vehicle's design.

- ✓ **Factory-Fitted Aesthetics** – No exposed wiring or bulky add-ons.
- ✓ **Model-Specific Design** – Custom-engineered for a perfect fit.
- ✓ **Reduced Installation Time** – Faster, more efficient fitting process.
- ✓ **Consistent Quality** – Standardised installation across your fleet.
- ✓ **Minimised Downtime** – Get vehicles back on the road quicker.

By streamlining the installation process and enhancing the visual and functional integration of our products, we help fleets achieve compliance, reliability, and efficiency without compromising on aesthetics.

Protect, Monitor & Improve Fleet Safety

Advanced camera solutions designed to improve **driver awareness**, **fleet safety**, and **compliance**. Our systems offer comprehensive coverage of critical areas around the vehicle, helping to reduce blind spots, prevent collisions, and protect vulnerable road users.

Key Coverage Areas:

- ✓ **Front View** – Provides a clear view of the road ahead, improving awareness in busy environments and assisting with manoeuvres.
 - ✓ **Side Coverage** – Eliminates blind spots, helping drivers detect cyclists, pedestrians, and other vehicles, especially in urban areas.
 - ✓ **Rear View & Reversing Assistance** – Enhances visibility when parking or reversing, reducing the risk of collisions with obstacles or people.
 - ✓ **Enhanced Load Visuals** – Allows drivers and fleet managers to monitor cargo in real-time, reducing the risk of theft or tampering.
 - ✓ **5th Wheel Camera** – Provides a clear view of the kingpin and fifth wheel, reducing the risk of misalignment and accidents.
 - ✓ **Trailer Suzie Connection View** - A perspective to verify correct trailer cable connections and monitor security.
-

Side perspectives:
5m outward x 15m in depth.



Forward perspectives:
12m Across x 15m in Depth.



Reverse / Rear View
10m Across x 15m in Depth.



Camera perspective of the load on the vehicle.

Suzie View Camera for visibility of equipment
connected to trailer



5th Wheel Camera View to assist with height of
kingpin



Recordable camera systems provide continuous monitoring and secure footage storage, ensuring fleet safety, compliance, and accountability.

- ✓ **Accident Evidence** – Capture incidents with time and location of footage for insurance and liability protection.
- ✓ **Driver Training** – Review footage to improve driving habits and safety.
- ✓ **Theft & Security** – Monitor vehicles and cargo to prevent theft and vandalism.
- ✓ **Regulatory Compliance** – DVS, FORS, and fleet safety standards.
- ✓ **Remote Access** – View live or recorded footage from anywhere.

TRACTOR UNIT Camera System



RECORDABLE TRACTOR 3 CAMERA SYSTEM INTO FACTORY SCREEN

- Forward Facing Camera
- Near Side Camera
- Off Side Camera
- DVR
- Plug & Play Harness

OPTIONAL CAMERA ADD-ONS

- 5th Wheel Camera
- Load Camera
- Driver Facing Camera
- Trailer Reverse Camera
- Suzie View Camera

Extended Warranty Option of 5 years available.



RECORDABLE TRACTOR 3 CAMERA SYSTEM WITH 7" MONITOR

- Forward Facing Camera
- Near Side Camera
- Off Side Camera
- DVR
- 7" Monitor
- Plug & Play Harness

OPTIONAL CAMERA ADD-ONS

- 5th Wheel Camera
- Load Camera
- Driver Facing Camera
- Trailer Reverse Camera
- Suzie View Camera

Extended Warranty Option of 5 years available.

RIGID Camera System

RECORDABLE RIGID 3 CAMERA SYSTEM INTO FACTORY SCREEN



- Forward Facing Camera
- Near Side Camera
- Off Side Camera
- DVR
- Plug & Play Harness

OPTIONAL CAMERA ADD-ONS

- Load Camera
- Driver Facing Camera
- Reverse Camera

Extended Warranty Option of 5 years available.

RECORDABLE RIGID 3 CAMERA SYSTEMS INTO MONITOR



- Forward Facing Camera
- Near Side Camera
- Off Side Camera
- DVR
- 7' Monitor
- Plug & Play Harness

OPTIONAL CAMERA ADD-ONS

- Load Camera
- Driver Facing Camera
- Reverse Camera

Extended Warranty Option of 5 years available.

DVS - Direct Vision Standard

New Renault vehicles now come equipped with radar, addressing a major portion of the DVS 2024 road compliance requirements.

Below is a breakdown of the remaining compliance needs, along with recommended kits to further enhance safety and driver aid.



DVS REQUIREMENT



- Turn Left Alarm
- Plug & Play Harness

*As new vehicles include forward facing radar and blind spot radar, the minimum requirement for DVS Compliancy is to add a Turn Left Alarm.

Extended Warranty Option of 5 years available.

TRACTOR DVS RECOMENDED



Existing Factory Screen
Supplied 7' Monitor

- Near Side Camera
- Turn Left Alarm
- Plug & Play Harness

*Recommend a Near Side Camera for additional viewing within the DVS24 Compliancy for further driver aid.

Extended Warranty Option of 5 years available.

DVS - Direct Vision Standard

RIGID DVS RECOMENDED



Existing Factory Screen

Supplied 7' Monitor

- Near Side Camera
- Turn Left Alarm
- Plug & Play Harness

*Recommend a Near Side Camera for additional viewing within the DVS24 Compliancy for further driver aid.

Extended Warranty Option of 5 years available.

TRACTOR DVS VISUAL DETECTION



Existing Factory Screen

Supplied 7' Monitor

- MOIS Forward Facing Camera
- BSIS Near Side Camera
- Turn Left Alarm
- AI Detection Kit
- Plug & Play Harness

Extended Warranty Option of 5 years available.

RIGID DVS VISUAL DETECTION



Existing Factory Screen

Supplied 7' Monitor

- MOIS Forward Facing Camera
- BSIS Near Side Camera
- Turn Left Alarm
- AI Detection Kit
- Plug & Play Harness

Extended Warranty Option of 5 years available.

Driver Wellbeing

POWER DISTRIBUTION BOARD

The Heart of Your In-Cab Power System

Running inverters, microwaves, or fridges? A Power Distribution Board (PDB) is vital. It safely manages power to high-demand appliances, protecting your vehicle's electrical system and avoiding overloads or poor DIY connections. With clean wiring, proper fusing, and easy expandability, the PDB keeps everything running smoothly—and future-ready.

If you're powering in-cab appliances, a PDB isn't optional—it's essential.

Why It Matters

- **Safe, Centralised Power**

Distributes power cleanly from one source, avoiding loose wiring or fuse overloads.

- **Handles High-Demand Loads**

Built to safely power inverters, microwaves, and other heavy-use appliances.

- **Protects Vehicle Systems**

Prevents damage to OEM wiring by avoiding risky DIY or tap-in connections.



Enables distribution of up to 200 amps of power within the cab.

Necessary for all items that require more than 10 amps

Such As: Inverter; Fridge; Kettle; Halogen Light Bar

CODE: REN-PD-K

INVERTER KIT



2kw Pure Sine Wave Inverter

Ability to run a variety of appliances

Fitted with RCD Socket on custom panel for Safety and Security in the cab

CODE: REN-INVERT-K

Driver Wellbeing



ANDERSON LEAD KIT

Industry standard 175 amp connection for powering trailer accessories

CODE: REN-A-LEAD-K



MICROWAVE KIT

Harness including fitting kit and all relevant wiring

CODE: REN-M-K



COMBI KIT

A complete kit of a Distribution Board kit and the Anderson Lead kit.

CODE: REN-COMBI-K



ANDERSON EXTENTION LEAD

Providing additional length to the Anderson Lead for connection between truck and trailer.

CODE: REN-A-EX-K

Body Work Additions



CARBON FIBRE DOOR HANDLE SET

- These sleek Carbon Fibre door handles enhance style and feel for your drivers.



CARBON FIBRE GRILL SIDE PANELS SET

- These Carbon Fibre grills add a premium look to your truck.



CARBON FIBRE EXTERNAL A-PILLAR PANELS SET

- Modern, Premium look while being weather resistant.

Interested in a specific part in Carbon Fibre?

Ask your salesman to look into it! We can explore options to enhance durability and upgrade your truck's style.

Lighting Kits

Our plug-and-play strobes come with tailored cable kits featuring the correct pins and plugs for each vehicle, ensuring a seamless and hassle-free installation. Designed for compatibility and ease



2 FRONT STROBE KIT

- 2 x Front Strobe Lights
- Plug & Play Harness

CODE: REN-2FS-K

2 REAR STROBE KIT

- 2 x Rear Strobe Lights
- Plug & Play Harness

CODE: REN-2RS-K

4 FRONT STROBE KIT

- 4 x Front Strobe Lights
- Plug & Play Harness

CODE: REN-4FS-K

4 REAR STROBE KIT

- 4 x Rear Strobe Lights
- Plug & Play Harness

CODE: REN-4RS-K

The Renault Frame



The Renault Framework is a heavy-duty mounting system designed specifically for the rear of Renault artic cabs. Built for practicality and reliability, this welded frame provides a secure and standardised location to attach essential on-the-road accessories.

Ideal for fleets looking to maintain a tidy cab area while ensuring all necessary tools are carried safely and professionally.

Accessory Options

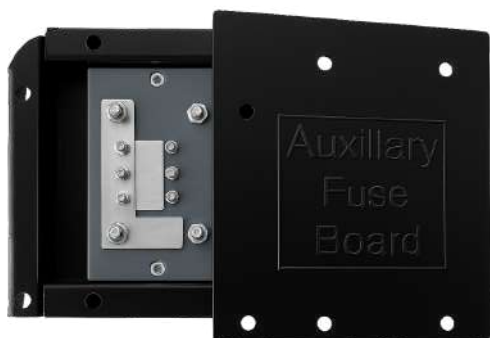
If you're looking for a secure and organised way to store your operator's larger tools, the Renault Frame is the perfect solution. Built for practicality and durability, it keeps essential items in one tidy location – ready for work, every time.

For example:

- **Broom** – for sweeping out trailers after tipping or pallet deliveries.
- **Shovel** – ideal for clearing debris or loose material on site.
- **Wheel Chocks** – to keep the vehicle safely secured during loading and unloading.
- **Flood Lights** – to improve visibility when working in low light or night conditions.

Want to tailor it to your fleet's needs? Speak to your salesperson today to find out how the Renault Frame can be set up to work best for you.

Accessories:



Distribution Board

CODE: REN-DB



Tablets Holder

CODE: REN-TH



Ministry Plate Holder

CODE: REN-MPH



Height Indicator

CODE: REN-HI



Firebox

CODE: REN-FIRE

Renault Trucks

Custom Logo

CODE: REN-LOGO

Individual Parts



MOIS FORWARD FACING CAMERA

- Plug & Play Harness

CODE: REN-FFC-MOIS-K



RIGID NEAR SIDE CAMERA

- Plug & Play Harness

CODE: REN-R-NS-CAM-K



RIGID OFF SIDE CAMERA

- Plug & Play Harness

CODE: REN-R-OS-CAM-K



TRACTOR NEAR SIDE CAMERA

- Plug & Play Harness

CODE: REN-T-NS-CAM-K



TRACTOR OFF SIDE CAMERA

- Plug & Play Harness

CODE: REN-T-OS-CAM-K



REAR CAMERA

- Plug & Play Harness

CODE: REN-HDR-CAM-K

Individual Parts



DRIVER FACING CAMERA

- Plug & Play Harness

CODE: REN-DF-CAM-K



7' MONITOR

- Plug & Play Harness

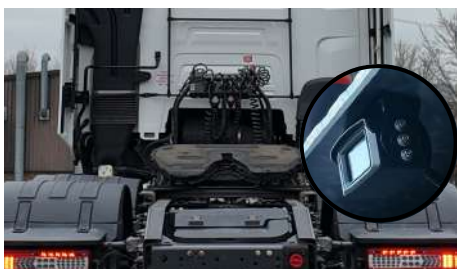
CODE: REN-SDM-KIT



LOAD VIEW CAMERA

- Plug & Play Harness

CODE: REN-L-CAM



5TH WHEEL CAMERA

- Plug & Play Harness

CODE: REN-5W-CAM



DVR

- Plug & Play Harness

CODE: REN-DVR-K



SUZIE VIEW CAMERA

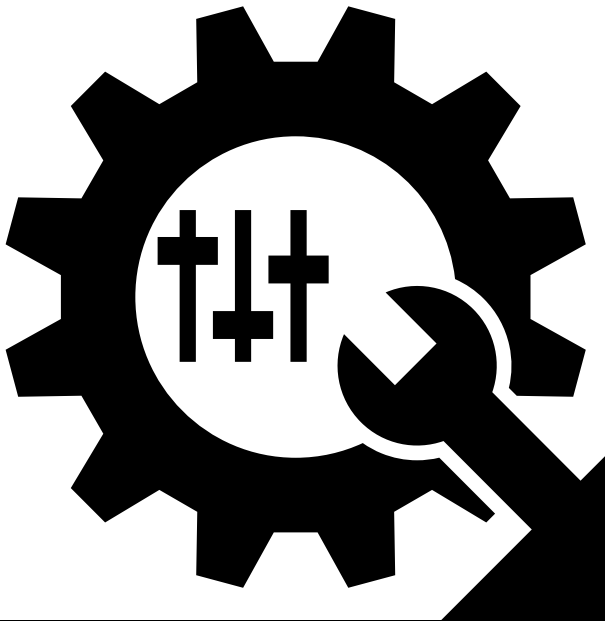
- Plug & Play Harness

CODE: REN-HDR-SUZI-A-CAM-K

Specific Requirement?

Any of the above not fit your requirement?
Ask your Salesman!

Our skilled manufacturing team has the expertise and design capability to work on custom projects, adapting to your unique needs and specifications. We're committed to providing products that meet your exact expectations, ensuring that every project is handled with care and precision.

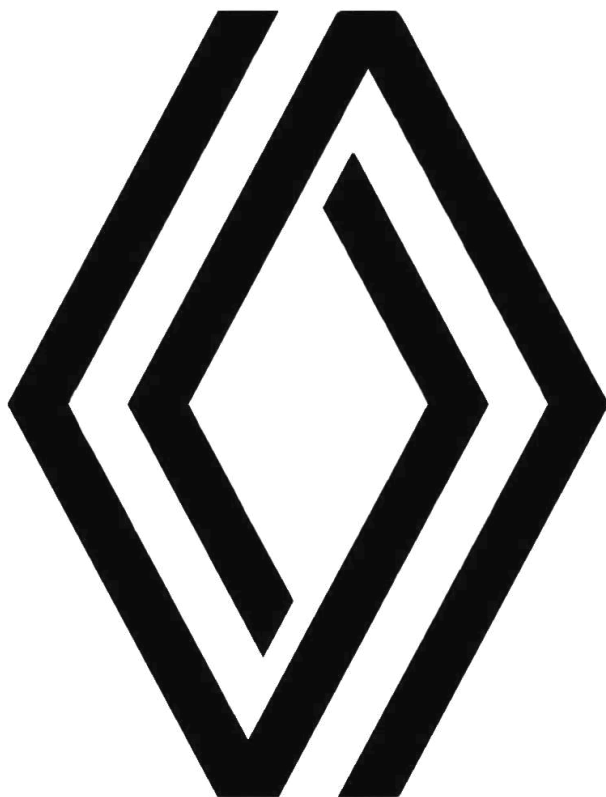


Accessories+
BY RENAULT TRUCKS COMMERCIALS



Long-haul transport | Goods transport | Refrigerated transport |
Tanker transport | Mining transport | Logging transport





RENAULT TRUCKS

Accessories+

BY RENAULT TRUCKS COMMERCIALS

REN-V1 | March 2025